

PROGRAMME AND PERFORMANCE ANALYST

RECRUITMENT PACK





HELLO...

Lewisham Homes is a not-for-profit housing provider established by the London Borough of Lewisham. We manage 19,000 homes on behalf of the council, operate our own maintenance company, and invest in the local community. We are also a key delivery partner in the Mayor of Lewisham's new homes programme which aims to deliver 1,000 new social homes by 2022.

In an inner London borough, where diversity is a defining characteristic and a key strength, we are committed to being an inclusive organisation, engaging with and empowering our staff, residents and other stakeholders. We recognise the impact that a secure, quality home has on life chances and we work in partnership with Lewisham Council and other partners to build and invest in safe, attractive and sustainable neighbourhoods.

As a major local employer with over 500 staff, we are proud to hold the Investors in People Gold Standard. We're passionate and proud of developing our staff, delivering excellent customer experiences and growing our business to shape a great future. To do this, we need innovative thinkers, who lead each project with energy and excitement. If you share our ambition, we hope you'll consider joining us.

A MESSAGE FROM THE CEO

Thank you for expressing an interest in joining the team at Lewisham Homes.

It's an exciting time to be joining us. We work in a vibrant and thriving borough, with a rapidly expanding population, but we face an acute shortage of housing, and high levels of inequality. We are committed to working with Lewisham Council to increase the supply of much needed new social homes. With a new Director of Development in place, we are looking to expand the Development team to facilitate this and as such, we need people who share our passion to tackle the housing crisis and our ambition to build 'thriving communities and places people are proud to call home'.

If you have a demonstrable track record of delivering new homes, and you can bring energy and fresh

thinking in order to drive forward an ambitious building programme we want to hear from you. You will have a collaborative approach that creates a positive can-do culture. This is an exciting opportunity to play a key role in our new build programme that will help shape the future of our borough.

For an informal discussion about the role please contact our recruitment partners Ocean Edge Executive Search on 023 8000 1153.

Margaret Dodwell
CEO
Lewisham Homes

Working in partnership with Ocean Edge Executive Search www.oceanedge.biz/lewisham

OUR MISSION

To provide safe, quality homes, deliver efficient services and enhance life chances.

Our ambitions are:



Our values are:



PROGRAMME AND PERFORMANCE ANALYST

Salary: £52,089

Based: Catford, London SE6 4RU

Reports to: Director of Development and Development Heads of Service

Direct Reports: None

Our development team is charged with identifying and delivering new high quality housing across Lewisham.

We are currently delivering a live programme of around 400 units through planning, procurement and onsite, and we have a commitment to the council to deliver at least 1,000 new social rent homes by 2022.

We are looking for a Programme and Performance Analyst to monitor our development programme to ensure documentation is in place for all schemes. You will take the lead in monitoring scheme progress, timelines and project milestones to ensure projects meet key performance KPIs.

Main purpose of the role:

- To report programme performance KPI's in a variety of formats for a range of audiences.
- Collaborate with the development team and central performance team to collect, collate, scope and define processes through the creation of a standard set of performance and project management documentation.
- To lead and coordinate the procurement plan and processes and reports for the team
- Assist with the implementation of business systems to support the Development programme.
- Carry out routine and complex detailed project financial viability appraisals.
- Monitor budgets and spend on project cashflow, and maintain good financial records.
- To lead the departmental business planning process.
- Lead the departmental audit and risk requirements.
- Lead market research analysis for potential development opportunities.
- Research good practice and latest best practice for development.

Main responsibilities:

- Monitor, manage and review the development programme with project leads.
- Take responsibility for the submission of GLA / Council reporting.
- Work across the team to ensure operational data input, checklist and documentation in place for all schemes.
- Monitor scheme progress, timelines and project milestones.
- Take responsibility for team risk register and assessments.
- Lead the procurement and administration on behalf of the development directorate in conjunction with project leads.
- To determine, monitor and review programme and project risks, actions, issues and dependencies.
- Carry out internal research analysis of local values, amenities, comparables for all potential projects.
- Managing systems to report on progress to external funders, Regeneration and Investment Committee, and finance and tenant services departments.
- To lead the research and data analysis for the production of team development and business plan.
- Take responsibility for the drafting of the team business plan.
- Carry out complex and routine financial appraisal for all schemes with project leads.
- Carry out project programming on MS Project with project leads.
- Carry out data analysis of programme milestones, costs, values etc.
- Carry out scheme audits against GLA requirements.
- Maintain knowledge of the capital funding guide and other Government policy documents.
- Assist in the preparation of bid documentation if required.
- Implement reporting tools.
- Provide accurate and timely performance indicators and reports to monitor programme performance as well as providing property related information to other teams when requested.
- Provide reporting on development KPI performance.
- Represent Lewisham Homes and liaise with other organisations including the Council, GLA, funders, stakeholders where necessary.

Business & Personal Development

- Approach activities with a positive can-do attitude, demonstrating real ownership of issues and delivering on commitments.
- Approach challenging targets with an open mind.
- Act as a role model and ambassador for Lewisham Homes values and culture.
- Proactively pursue continuous development of personal skills through internal and external learning.
- Build and maintain an in-depth knowledge of the sector, competitors and drivers both locally and in the UK.
- Help build the profile of Lewisham Homes within the sector.

Health & Safety

- The postholder is required to comply with all Health & Safety at work policies, procedures and guidelines, which form part of this job description. The postholder must look after their own health, safety and welfare and be mindful of other persons who may be affected by their acts. Employees must co-operate and comply with management instructions regarding Health and Safety issues and report all accidents, incidents and problems as soon as practicable to their line manager or other manager.
- Ensure that health and safety and healthy working conditions are promoted across all projects, operating within the appropriate regulations, with effective oversight of the management of health and safety from on-site contractors and developers.

Safeguarding

- LH is committed to safeguarding and promoting the welfare of vulnerable adults. Safe recruitment of staff is central to this commitment, and LH will ensure that its recruitment policies and practices are robust, and that selection procedures prevent unsuitable people from gaining access to vulnerable adults.
- All staff working with Vulnerable Adults should be aware of, and share the commitment to safeguarding and promoting the welfare of vulnerable adults when applying for posts at LH.

This job description is not to be regarded as exclusive or exhaustive. It is intended as an outline indication of the areas of activity and will be amended in the light of the changing needs of the organisation.

PERSON SPECIFICATION

Programme and Performance Analyst

The following list of skills, knowledge, experiences and personal characteristics are classed as essential criteria for the role of Programme and Performance Analyst. Please consider how you meet these criteria to help inform your application and interview.

Experience

- Proficient user of MS Project, experience of using CRM and workflow systems.
- IT skills – Word, Excel and Access from intermediate to advanced level.
- Problem solving abilities and strong analytical skills.
- Strong spreadsheets and programming skills.
- Ability to prepare and design bespoke analysis, reports and dashboards.
- Experience of performance reporting to a variety of audiences in varying formats.
- Programme management experience, ideally within residential development.
- Very strong report writing and research skills.
- Experience of affordable housing development processes from inception to handover.
- Proven experience of financial viability modelling using Pamwin / Proval or bespoke financial modelling software.
- Understanding of commercial viability and development challenges and constraints.
- Knowledge and experience of working within the public procurement requirements.
- Experience and knowledge of the GLA requirements including an understanding of GLA scheme documentation and GLA funding requirements.
- Proven project management skills including personal time management, audience communication and task co-ordination.
- Experience in financial planning and monitoring.
- Experience of working within residential development in a similar role.
- Good communication and team working.
- The ability to work productively within a team environment and own initiative.
- Collaborative and solution focused approach.
- Excellent project management skills.
- Excellent organisational skills.

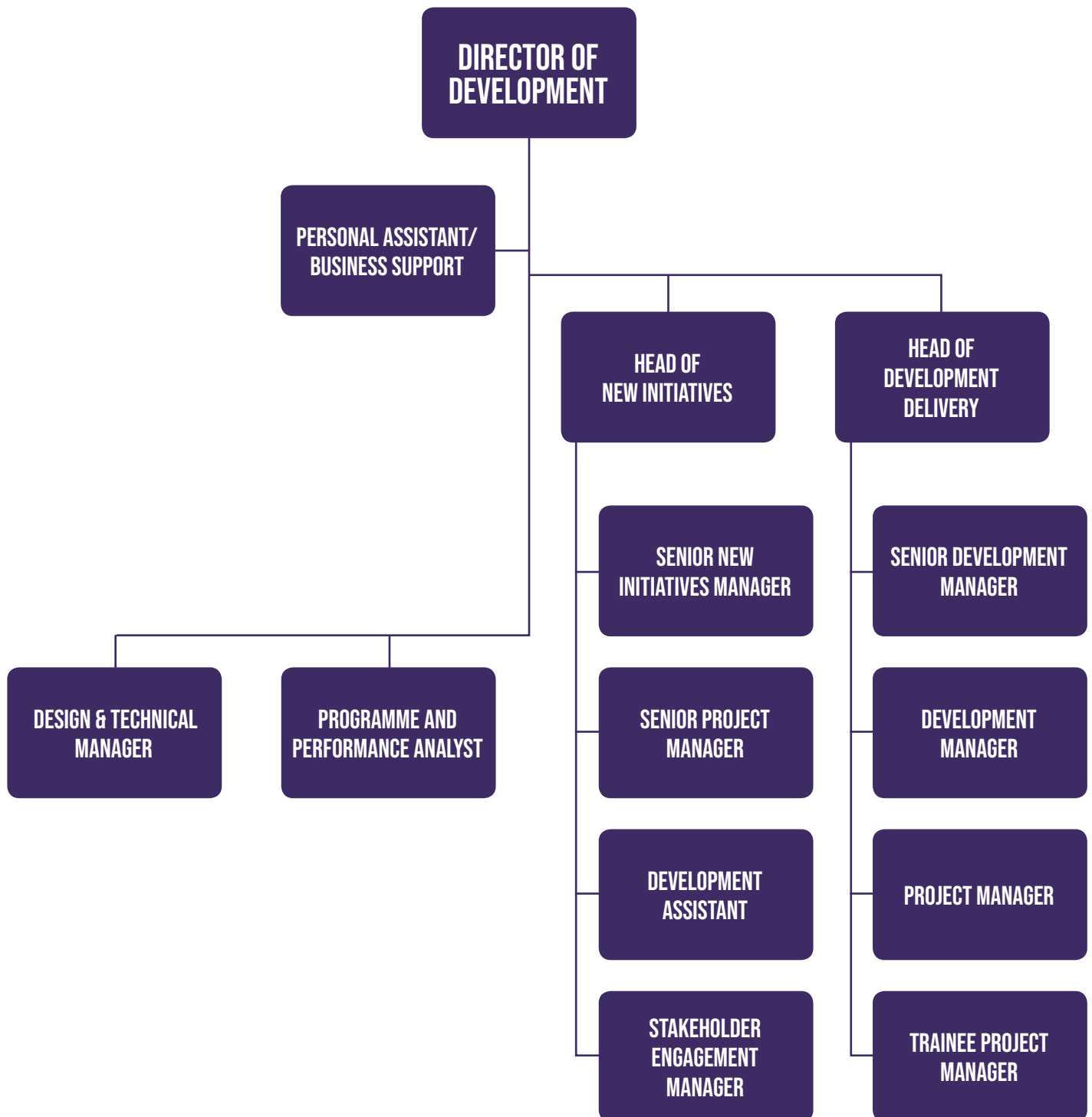
To apply

Please email your CV to our recruitment partners Ocean Edge, email: jobs@oceanedge.biz

Closing date is Friday 24 May, 2019.

If you would like an informal discussion about this opportunity please get in touch with the Ocean Edge team on 023 8000 1153 or email philipfoster@oceanedge.biz

DEVELOPMENT STRUCTURE



REWARDS AND BENEFITS

As you help shape a brighter future for Lewisham, you will be recognised and rewarded for your achievements with highly competitive pay, generous benefits and flexible working arrangements to match your priorities and commitments.

Pension

The Local Government Pension Scheme provides a flexible and portable plan that will help you put money aside to provide you with an income when you reach retirement.

Interest-free season ticket loan

To help you get to and from work we can lend you the cost of a season ticket – interest free – and deduct it from your salary over the next 12 months.

We also offer:

- Generous annual holiday, starting at 26 days a year
- Interest-free bike or computer loans
- Discounts through our partners for redecorating your home
- Discounts at local shops and cafes
- Social events and activities throughout the year



Working in partnership with Ocean Edge Executive Search www.oceanedge.biz/lewisham

TO APPLY

- Please email your CV to our recruitment partners Ocean Edge, email: jobs@oceanedge.biz
- **Closing date is Friday 24 May, 2019**
- If you would like an informal discussion about this opportunity please get in touch with the Ocean Edge team on **023 8000 1153**.

OCEAN EDGE
EXECUTIVE SEARCH

